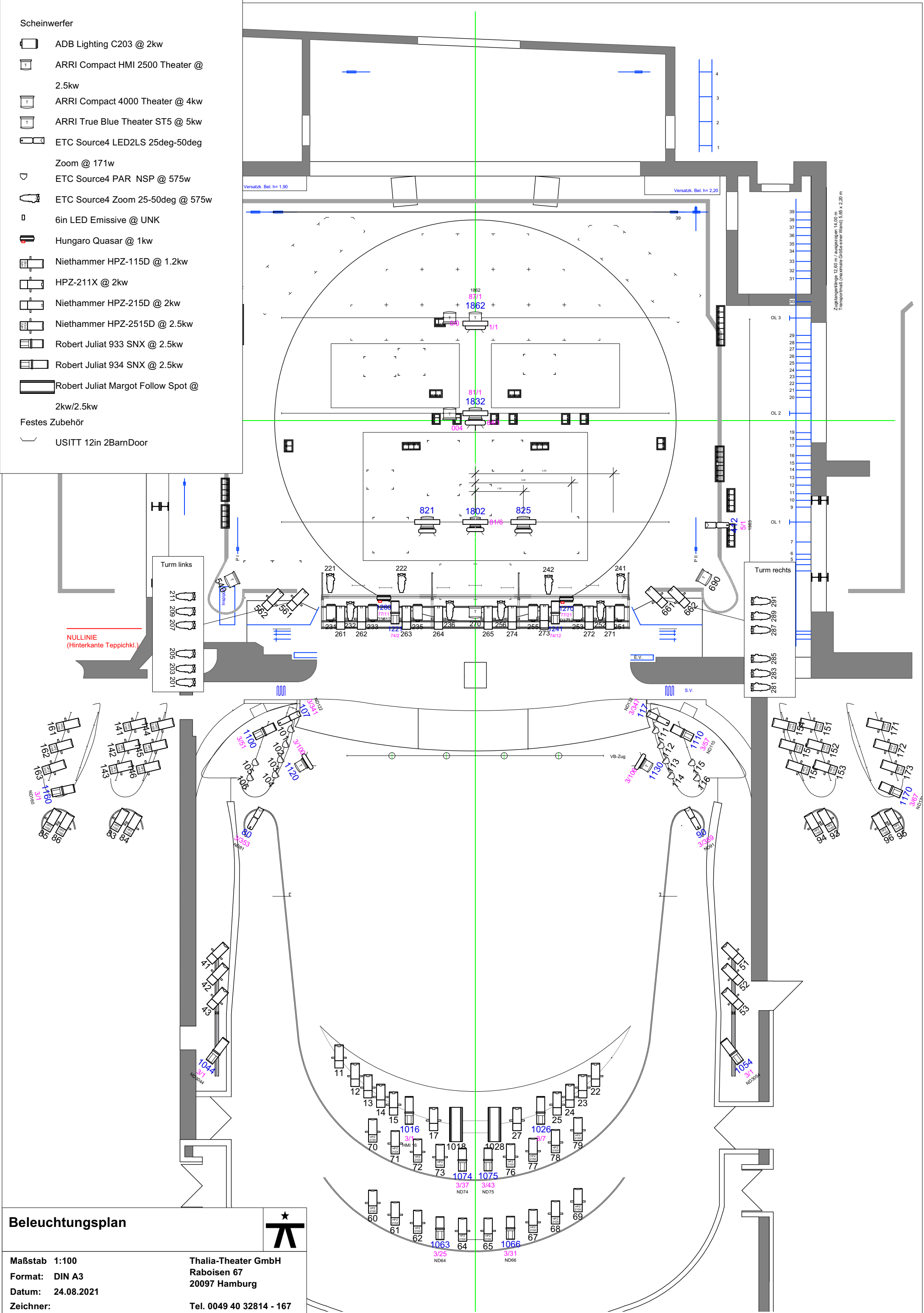


- Scheinwerfer
- ADB Lighting C203 @ 2kw
 - ARRI Compact HMI 2500 Theater @ 2.5kw
 - ARRI Compact 4000 Theater @ 4kw
 - ARRI True Blue Theater ST5 @ 5kw
 - ETC Source4 LED2LS 25deg-50deg
 - Zoom @ 171w
 - ETC Source4 PAR NSP @ 575w
 - ETC Source4 Zoom 25-50deg @ 575w
 - 6in LED Emissive @ UNK
 - Hungaro Quasar @ 1kw
 - Niethammer HPZ-115D @ 1.2kw
 - HPZ-211X @ 2kw
 - Niethammer HPZ-215D @ 2kw
 - Niethammer HPZ-2515D @ 2.5kw
 - Robert Juliat 933 SNX @ 2.5kw
 - Robert Juliat 934 SNX @ 2.5kw
 - Robert Juliat Margot Follow Spot @ 2kw/2.5kw
- Festes Zubehör
- USITT 12in 2BarnDoor



Beleuchtungsplan



Maßstab 1:100
Format: DIN A3
Datum: 24.08.2021
Zeichner:

Thalia-Theater GmbH
Raboisen 67
20097 Hamburg
Tel. 0049 40 32814 - 167